

# Stella Maris Catholic Primary School

Kia ora e te Whānau

Welcome back to school for Term 2. Thank you for your support and patience as we have adjusted to the new protocols and routines under the Orange Phase. It has been great to see parents back in and around the school, popping into the classes at drop off or pick up and having that chance to touch base personally with teachers and what your children have been doing in their learning. A reminder that if you do come into the school we strongly recommend that you wear a mask. We also ask that you avoid overcrowding any indoor spaces – if you need to please wait outside the atrium or the outside classroom door for your child to come out at the end of the day.

This term the concept for the schoolwide inquiry is Kaitiakitanga – guardianship and protection. Students will explore the connection between people and our world, and how we can respect and care for all of God's creation.

**Book Week** is always an exciting time at school. The children have enjoyed visiting the library through the week to create their wish lists and make some purchases. Tomorrow is the Book Character Parade. We intend to hold this outside on the bank overlooking the field at 11:30am. If the weather holds and we are able to have the Book Parade outside parents are welcome to join us. However, if the weather is wet we will have to hold the Book Parade inside, in Teams. If this happens parents will not be able to attend this time due to the lack of space and ability to ventilate the hall for the larger numbers. We will send a Beacon and App alert out at 10am tomorrow if the Parade has to move inside.

Ma te Atua koutou e manaaki

Catherine Cyprian

Principal

## Team News

### Matikao Team

Matikao Team welcomes our whanau back as we look forward to a happy and successful term ahead. We trust you all managed some relaxing family times over the Easter break. We also welcome back Mrs Pam Pyatt as we open St Mary for 2022. We know our new entrants will have a good start to school life under Pam's care.

### Mokehu Team

Welcome back to term 2. It has been nice to see many of you on the school grounds this week. The school has been buzzing with lots of excited children for book week and we look forward to seeing all of them dressed up tomorrow for our annual Book Character Parade. Please continue with the good homework habits that were established in term 1, and we ask you to continue to encourage your children with developing their independence by carrying their own bags, unpacking their belongings and coming into school ready to start their day.

### Huruhuru Team

Welcome back to a new term. This week we introduced our new Huruhuru Philosophy to our team. Our focus for this will be #respect #whakaute with our 3 main aspects being - #respectourselves #respectothers #respectenvironment. Over the next few weeks we will participate in a variety of learning activities to expand our understanding and use of common vocabulary across the team. Students have had the opportunity to apply for a number of monitor positions this week, including carpark valet, PE shed and librarian. These situations allow students to provide service within the school and develop their leadership skills.





## DRS Message

As we return to school we attempt to surround ourselves in the joy of our Risen Lord. The season of Easter doesn't end on Easter Sunday, in fact this is the very beginning of the most joyful time for us as Christians. Eastertide is the period of 50 days, spanning from Easter Sunday to Pentecost Sunday. Throughout this time we explore the Gospel stories of Jesus appearing to the Disciples and His words of commission and encouragement to begin their Apostolic mission. It is interesting to note that in proving His resurrection He talks, shares a meal and walks along side the Disciples. Perfect metaphors for how we too can experience the risen Jesus. In our sharing of time with those close to us, in talking to others and walking alongside others during their hard times and good times. The Disciples also felt the presence of Jesus in their actions. This is true for us as well. We pray that we too can feel the presence of the Risen Jesus, rising again, today and tomorrow as we attend to our call to bring about the Kingdom of Heaven in our own lives.

*Dear Lord, may I realise afresh today what Your death and resurrection mean for me. Forgiveness, freedom, and the ability to walk with You through this fallen world into eternity. May I always find my satisfaction in You and Your willingness to offer Yourself to me. In Jesus' name, Amen.*

## SCHOOL NEWS

### Buses Term Two

If your child is a regular bus user and you have not yet completed a bus sheet, please do so, then we can add their name to the permanent bus sheet for 2022. After we have received this information you will only need to advise the school office if there is a change to the afternoon bus arrangement for your child. Please email your completed bus sheet to [colleen@stellamaris.school.nz](mailto:colleen@stellamaris.school.nz)

[http://stellamaris.school.nz/wp-content/uploads/2022/04/bus\\_sheet-.pdf](http://stellamaris.school.nz/wp-content/uploads/2022/04/bus_sheet-.pdf)

### Mohehu And Matikao Dance Term One

The cost for these dance sessions was \$30.00. If you have not already made payment we ask that you please do so. Payment can be made at the school office or via internet payment ASB 12 3046 0362238 00. Please reference your child's surname and Dance.

### Sacramental Programme 2022


Enrolments are open Monday 9th May and families can obtain forms from the School office, the Parish office or from the back of St. John's or St Francis Church. Please note your child/children need to have been Baptised and have turned 8 by the 9th May 2022. Enrolments close on the 29th May and the classes begin on the 5th June. Any queries then please email Farren Coetzee at [farrengcoetzee@gmail.com](mailto:farrengcoetzee@gmail.com)

### Learn Spanish At Your School

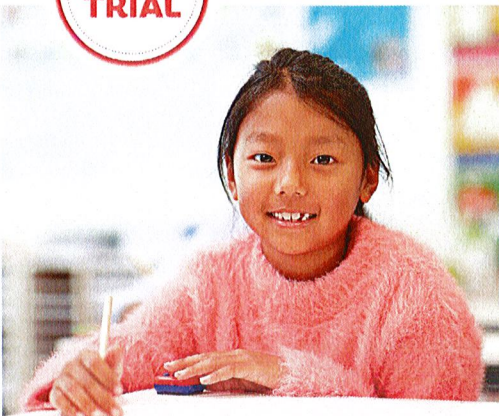
From a native speaker (South American Spanish). In a small group. In school hours. For more information. Please contact Cristina on 0210734528

### Dove Fellowship For Women

Topic: Be his Light. 2 Cor 4:5-6. Speaker Judy Olsen. Come, meet and fellowship with women. Please wear a mask. For more information please contact Sylvia 021 088 22990. 18th May, 7.30pm at St Thomas More Church, 336 Wairau Road, Glenfield.




FREE TRIAL



Experience Kumon English or Maths over two weeks during May

Find out how we can develop in your child:

- calculation and reading ability
- concentration
- a daily study and reading habit
- the confidence to learn independently.



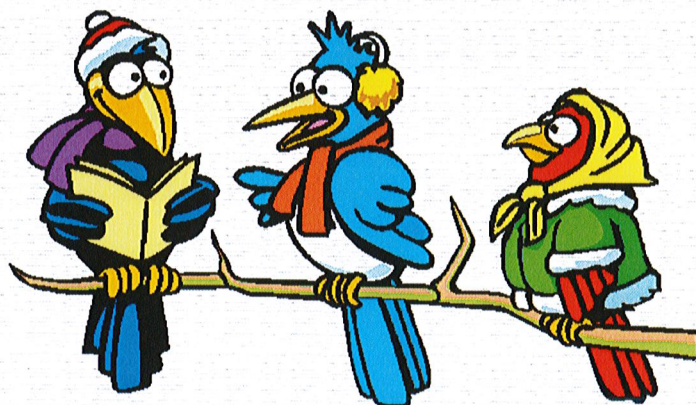
Limited availability, don't miss out. Enquire now!

**KUMON SILVERDALE EDUCATION CENTRE**  
 Instructor: Rebecca Lu  
 Tel: 021 088 29858  
 Email: [kumon.silverdale1@gmail.com](mailto:kumon.silverdale1@gmail.com)

\*Scan the QR code to visit website or view T&Cs



# SCHOLASTICS BOOK CLUB



*Order forms have gone home  
this week - orders will close on*

*Tuesday 17th May*

*This is a wonderful way of  
supporting your child's reading  
and raising bonus points for the  
school to purchase curriculum  
items. Please hand your orders  
into the school office.*

*Your support is appreciated.*



SCHOLASTIC





# Stella Maris Catholic Primary School

## Mark Your Diaries

06 May	Book Character Parade
08 May	Mothers' Day
17 May	Rosmini Open Day 1.30pm
23 May	Parish Care and Share Week
06 Jun	Queen's Birthday School Closed

## 2022 School Term Dates

TERM 2	Monday	02 May – Friday	08 Jul
TERM 3	Monday	25 Jul – Friday	30 Sep
TERM 4	Monday	17 Oct – Tuesday	20 Dec

## 2022 Public Holidays

Queen's Birthday	06 Jun
Matariki	24 Jun
Labour Day	24 Oct

## Family Whanau Book Resource Link

<http://www.faithalive.org.nz/assets/Resources/Family-whanau-book.pdf>

## Telephone

### Netball

– Cancellation Number –  
09 424 2318

### Parish Office

– Parish Priest –  
Father Raphael  
09 426 5599 ext 2

– Parish Secretary –  
Theresa Fouché  
09 426 5599 ext 1

[theresa@hbcparish.org.nz](mailto:theresa@hbcparish.org.nz)

### SKIDS

– After School Care –  
027 846 1725

### School Dental Clinic

09 426 8470

### Bayes Buses

09 426 5504

### Public Health Nurse

09 427 0300 ext 4339

### Influenza A (H1N1)

– Advise Healthline –  
0800 611 116

### Coronavirus Healthline

0800 358 5453

### Stella Maris School

– Website –

[www.stellamaris.school.nz](http://www.stellamaris.school.nz)

### School Bank Details

Attendance Dues &  
Donations

12 3046 0362238 01

All other Payments

12 3046 0362238 00

### PTFA Bank Details

12 3046 0376269 00

### Waitemata Health

[www.webhealth.co.nz](http://www.webhealth.co.nz)

Auckland Youth

[www.akyouth.org.nz](http://www.akyouth.org.nz)

**Bricks 4 Kidz AFTER SCHOOL STEAM PROGRAMME**

Buddy-up 10% OFF Special

Scan to enrol

Fun Hands-on STEAM learning with LEGO Bricks

Where STEAM meets FUN

Build upon creativity, problem solving, team work, and critical thinking.

Empowering today's students to become tomorrow's problems solvers and innovators

**Junior Robotics Level 1:** Coding Introduction Year 0-4  
Combines hands-on technical model building with "drag & drop" coding and robotics.

**Junior Robotics Level 2:** Sensors Programming Year 2-4  
Introduces sensors, develop students robotics and coding principles.

**Motorised Model Building** Year 0-6  
Experience the fun of hands-on model building to develop engineering & problem solving skills

**Stella Maris School**

**MONDAY**  
Junior Robotics Lv1 and Lv2: Coding Introduction  
Robotics Class: 3:15 – 4:45pm  
Location: St Francis Rm

**TUESDAY**  
Motorised Model Building  
Robotics Class: 3:15 – 4:15pm  
Location: St Francis Rm

Try our Creative Package! An extra hour of FUN STEAM challenges to inspire creativity and problem solving.

[www.bricks4kidz.co.nz/auckland-rodney/](http://www.bricks4kidz.co.nz/auckland-rodney/) | 022 597 6688 | auckland-

**“Ki te ingoa o te Matua, O te Tamaiti O te Wairua Tapu, Amene”  
In the Name of the Father, Son and Holy Spirit Amen**



CONTACT US FOR  
EVERYTHING REAL ESTATE.

0800 765 348

Tandem Realty Limited Licensed Agent REAA 2008

SILVERDALE • OREWA • WHANGAPARAOA

**Harcourts**  
Tandem Realty

**skids**  
Safe Kids In Daily Supervision

before school  
after school  
holiday programmes  
in school programmes

**Daniel Torres**  
Franchise Owner

Stella Maris / Oteha Valley / Waitoki  
T. 09 443 8446  
M. 027 846 1725  
E. daniel@skids.co.nz

www.skids.co.nz f www.facebook.com/skidsnewzealand

**Life's Great  
with Northern Arena**

09 421 9700  
www.northernarena.co.nz  
info@northernarena.co.nz

**Northern Arena**  
LEARN TO SWIM | SILVERDALE, AUCKLAND

BOOK NOW!

**EQ MATTERS NZ**

**EMOTIONAL WELLBEING & MINDFULNESS COACHING**

**Brenda Neville**

Providing parents and children with the skills needed to develop resilience to help manage anxiety & stress

For more information on coaching or upcoming courses...

021 905 635 | EQ MATTERS NZ | www.eqmatters.co.nz

**NORTHSIDE PSYCHOLOGY & EDUCATION ASSOCIATES LTD**

**Dr Judy Selvaraj**  
Director  
PhD (Inclusive Education)  
MA (Hons, Psychology)  
MEd (First Class Hons)  
BA (Education/Psychology)  
Dip Ed (Secondary)  
The University of Auckland  
Registered Educational Psychologist  
Registered Teacher

- Special Education Needs
- Assessment and Advice
- IEPs for Inclusive Practices
- Professional Supervision
- Family Counselling
- All Ages
- Career Development

Ph: 022 547 5822 Email: selvaraj@xtra.co.nz www.northpsych.co.nz

**Wright's**  
OUTDOOR EQUIPMENT CENTRE

More Brands. More Choice. Best Value-Guaranteed!

Shop Online: www.buywright.co.nz  
Email: sales@wrightsoutdoor.co.nz  
Ph: 094795545  
Add: 520-522 East Coast Road, Mairangi Bay

- Mowers
- Chainsaws
- Trimmers
- Brushcutters
- Blowers-Vacs
- Hedge Trimmers
- Water Blasters
- Shredders
- Woodfires
- Generators
- Engines
- Water Pumps
- BBQs
- Posthole Borers
- Sprayers
- Rotary Tillers
- Concrete Saws

**KUMON**

**'Find out why I'm good at maths and love reading!'**

Your child can strengthen essential maths and English skills with Kumon.

**KUMON SILVERDALE EDUCATION CENTRE**  
Instructor: Robert Wang  
Mobile: 021 0882 9858  
Email: kumon.silverdale1@gmail.com

New Enrolling!

**PROUDLY SUPPORTING**  
**Stella Maris School**

**Simon Lucas**

Cnr Wairau & Target Road, Glenfield, Auckland  
09 444 81 44 • www.simonlucas.co.nz

**SECURE COMPUTE**

0800 808 879

**Your Local Technology Service Provider**

- \* Remote/Onsite Support
- \* Manage Infrastructure
- \* Cyber Security Solutions
- \* Residential & Commercial
- \* Manage Cloud Services
- \* Digital Transformation

E: info@securecompute.co.nz A: 3 Whaley Greens, Silverdale.

**15% OFF**

**Your total bill**  
Present voucher in-store.

SILVERDALE  
16 WAINUI RD  
Not valid with VIP or other offers.  
Excludes alcohol  
Expires 30/11/21

**THE COFFEE CLUB**

**Maria O'Flaherty and Ben Fernandez**  
MUSIC for all occasions

Pop and Jazz Bands  
Weddings, Functions and Corporate Events  
Studio Recording  
Vocal, Guitar and Piano lessons

**Maria O'Flaherty** Bachelors of Music, BMus  
Mob: (64) 21 032 5287  
Email: oflaherty.maria@gmail.com  
www.marioflaherty.com  
www.facebook.com/marioflahertymusic

**Ben Fernandez** MAus, B.Sc, DCS, PGDMM  
Mob: (64) 210 565 506 Res: (64) 9 419 9549  
www.benfernandez.com  
www.facebook.com/benfernandezmusic  
www.youtube.com/benfernandezmusic